

# Automatic shut-off cock for expansion vessels

Art. 540 – 543



100% MADE IN ITALY 

**Function** Pintossi+C automatic shut-off cocks for expansion vessels are the optimal solution to carry out operation of maintenance and replacement of expansion vessels, without the necessity to empty the system. These cocks are made of a **double check valve incorporated** in the fitting which allows the closure both on the system side and on the expansion vessel side, avoiding water leaks. The valve is available with or without the drain cock and can be easily installed on the fitting thanks to the **PTM** (Pintossi soft sealing), which allows a quick and safe installation, without the use of additional sealing materials, like hemp or PTFE ribbon. Yellow brass finishing.

**Product range**

Art. 540	3/4"	Without drain cock
Art. 543	3/4"	With drain cock

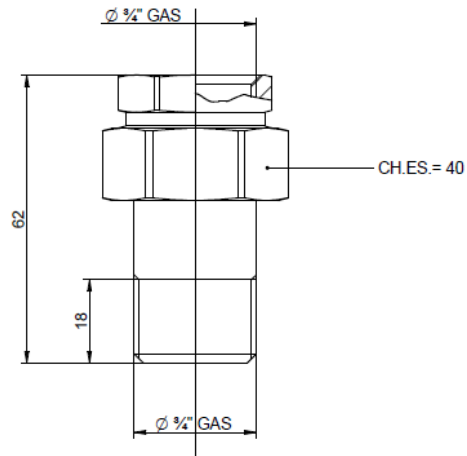
**Technical specifications**

Fluids:	Water or glycol solutions
Max. glycole:	30%
Max. working temp.:	100°C
Max. working pressure:	10 bar

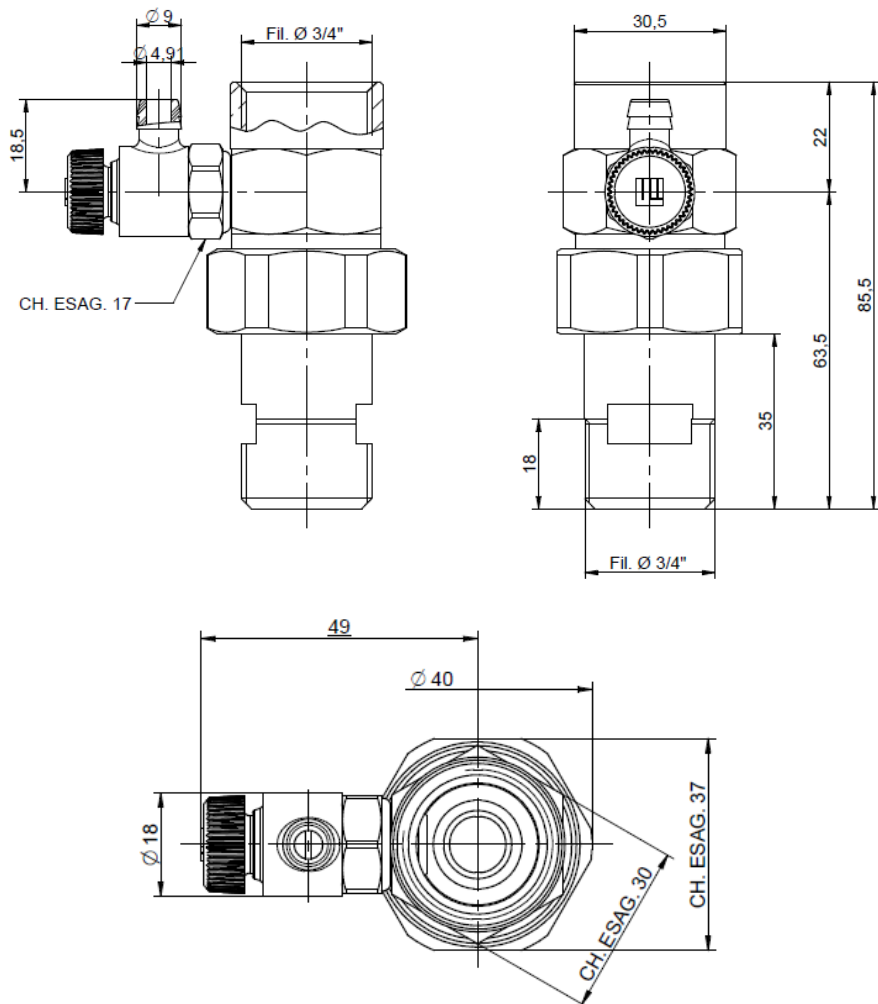
**Materials**

Body:	Brass CW617N
Fitting:	Brass CW614N
Nut:	Brass CW614N
Checks:	Acetylic resin
Spring:	Stainless steel
Oring:	NBR

ART. 540



ART. 543



## Fluid characteristics

Reference standard for water treatments in heating systems is Norm UNI 8065:2019 which regulates the parameters that must be observed to avoid scale and corrosion phenomena.

In order to grant product warranty, the fluid characteristics must comply with the rules in force in the country of relevance or at least present features not less to the ones prescribed by the Norm UNI 8065:2019.

In particular, minimum standards necessary but not sufficient to control are the following:

Fluid aspect: Limpid

PH: Between 7 and 8

Iron (FE): < 0,5 mg/kg (< 0,1 mg/kg for steam)

Copper (CU): < 0,1 mg/kg (< 0,05 mg/kg for steam)

Antifreeze: Passivated Propylene Glycol

Conditioning: as indicated by the producer

In any case when using antifreeze and conditioning solutions, is required to control and verify the correct compatibility between these substances and the construction materials stated in Pintossi+C technical datasheet.